

CUBBY'S CORNER

MAPLE AVENUE ELEMENTARY SCHOOL
WEEKLY NEWSLETTER
THURSDAY, AUGUST 24, 2023

SUZANNE PYSZKA, PRINCIPAL



LISA JOHNSON, ASSISTANT PRINCIPAL

JILL RIOUX, DEAN OF STUDENTS

GETTING TO AND FROM SCHOOL



IN THIS ISSUE

- GETTING TO AND FROM SCHOOL
- BUS ROUTES
- DROP OFF/PICK UP
- OPEN HOUSE INFORMATION
- DISMISSAL FORMS TO RETURN
- NEW FACES
- ANNUAL FORMS TO COMPLETE
- PFT NEWS
- SAVE THE DATE

BUS ROUTES

Bus routes have been updated for the 2023-24 school year and are available on the SAU 19 website (<https://www.goffstown.k12.nh.us/>). Choose **Bus Routes** under the **Parents** tab. Please review the appropriate bus run for your child as routes and stops may have changed.

Per town ordinance, between 7:55-8:40 am and 2:15-3:45 pm, only buses will be allowed to turn from Elm Street onto Maple Avenue. The large driveway will be used for buses and staff vehicles only. Parents and guardians dropping off or picking up students will use the small driveway in the front of the building. Both of our parking lots are used for staff parking only. **Please stay in your car when dropping off and picking up your children.**

For more details, please refer to the drop off and pick up instructions on the following page. Copy and paste this link to watch the video created by Goffstown Police on YouTube: <https://youtu.be/6WMATCFirzs>. This video is also posted on Maple Avenue's website.

DROP OFF AND PICK UP PROCESS



Morning Drop Off Process in Small Driveway

- Families may enter the small driveway starting at 8:10 a.m. Prior to that, staff need to be able to access the school's parking spots.
- Cars must enter the driveway making a left hand turn.
- The driveway is a single lane. Cars enter in a single line and stay in the middle of the driveway.
- Drivers pull up to the furthest cone to let students out. Students should exit the car from the left side (if possible) and walk up the sidewalk to the access road and to the playground.
- Drivers should be considerate of others and quickly say their goodbyes.
- Maple Avenue staff will be supervising this area.

***Students who arrive after 8:30 a.m. must enter at the main office doors. They are tardy after 8:40 a.m.

Afternoon Pick Up Process

- Students may be picked up in the small driveway between 3:00 – 3:30 p.m.
- Cars must enter the driveway making a left hand turn only.
- Each car must have a sign with the **child's last name, teacher and grade level.**
- The driveway is a single lane. Cars enter in a single line and stay in the middle of the driveway.
- Drivers pull up to the furthest cone and Maple Avenue staff will assist students into the first 5 cars.
- Students are asked to wait in line on the sidewalk until dismissed by a staff member.

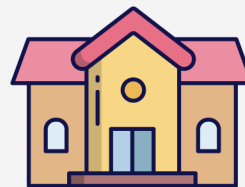
"On Foot" Traffic

- Parents/guardians wait at the bottom of the driveway near the crosswalk until a staff member releases the child. Parents/guardians should not walk up the line of students.
- Each "on foot" adult must have a sign with the child's last name, teacher and grade level.

*****For the safety of our students and staff, dogs and other pets are not allowed on school property.**

Thank you for helping us maintain a safe and efficient arrival and dismissal procedure!

OPEN HOUSE



Remember to sign up for your 30 minute time slot for the Open House on Thursday, August 31, 2023. Families will book 30-minute timeslots between 1:00 and 3:00. Refer to the email sent on August 16th for instructions on how to sign up. We look forward to seeing you all there!

ANNUAL FORMS TO COMPLETE

To help with a smooth transition back to school, we are asking families to complete our annual student forms **prior to the first day of school**. This process helps to reduce the amount of paper forms that go home and provides quicker delivery of information to our staff for processing and updating your student's information. You should have received an email with detailed information on August 23rd.

To access these forms, log into the PowerSchool Portal at sms.sau19.org. Navigate to "Forms" in the left menu. Forms are also available in the PowerSchool mobile app under "More". We ask that one parent or guardian per student complete the required "Annual" forms listed as "Empty" to provide our schools with important student and health information, as well as provide the necessary acknowledgements and permissions for the new school year. Your completed forms will have the status of "Pending", "Submitted" or "Approved" as staff review and process forms over the upcoming weeks. If possible, please try to upload PDF files instead of phone screen shots due to upload and storage restrictions.

If you need additional assistance accessing your PowerSchool account or requesting a new account, please contact Debra.Vallee@sau19.org.

PFT NEWS

Our parent group, Parents and Faculty Together (PFT) will be sending home a welcome letter with students on the first day of school. Please look for this in your child's backpack.

NEW YEAR, NEW FACES

Our staff have been hard at work getting the school ready to welcome students for the 2023-24 school year. New staff members, Mrs. Stratton (grade 1) and Miss Allen (grade 2) can't wait to meet their students!



DISMISSAL FORMS TO BE RETURNED

Parents/guardians should have received a Dismissal form via email earlier this week. Please complete this form and email it to hannah.sarette@sau19.org. It is important that we have information on how your child will get home from school **before students start class on September 5.**

SAVE THE DATE

8/31/23	Open House- Sign up for timeslots between 1:00 and 3:00
9/4/23	Labor Day- NO SCHOOL
9/5/23	First Day of School
9/14/23	School Picture Day- More information to come